



PRINTING INSTRUCTIONS

(DON'T PRINT THIS PAGE)

1. Print pages 2-8 of this PDF single-sided.
2. Carefully place the printed pages back into your printer.
3. Print page 9-15 of this PDF single-sided.
(if done correctly, the Card Backs will align with the Card Fronts)
4. Cut along the dotted lines.
5. (Optional) Place the Cards in Card Sleeves to protect them.

Tips: Use a heavier paper stock for better results!

CONTENTS:

Instructions	-	pg. 1
Face Cards	-	pg. 2-8
Card Backs	-	pg. 9-15



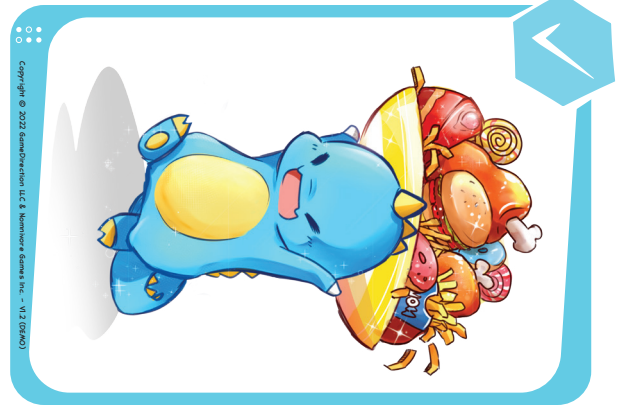
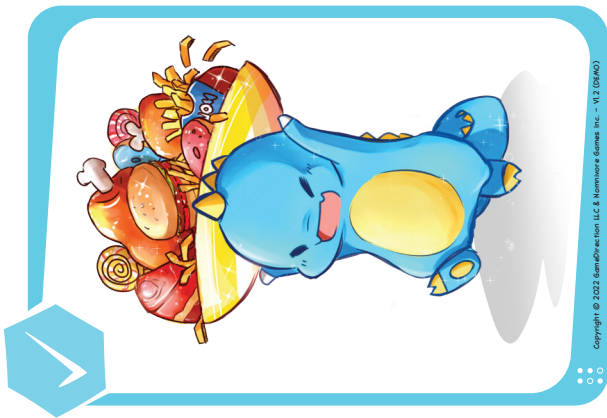
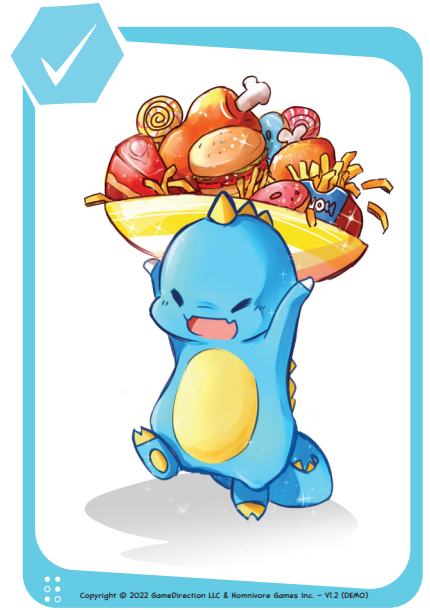
TO BUY  :
NomnivoreGames.com

VIDEO TUTORIAL:
GameDirection.net/SnackAttack

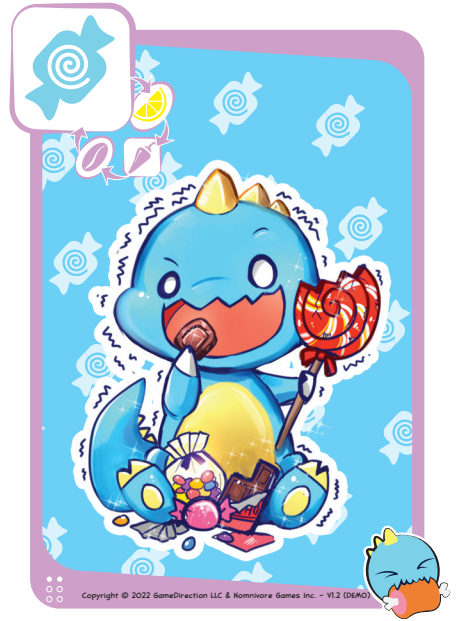
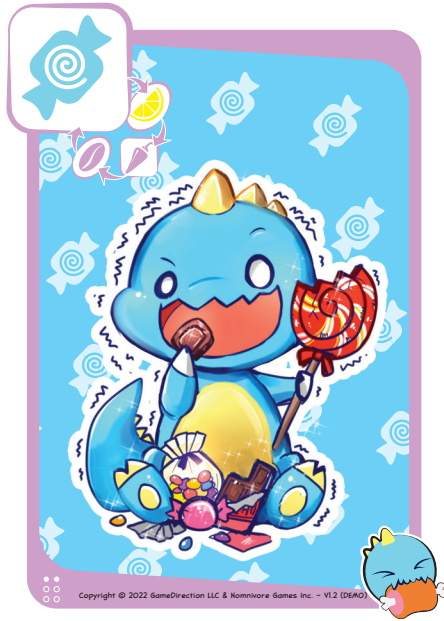
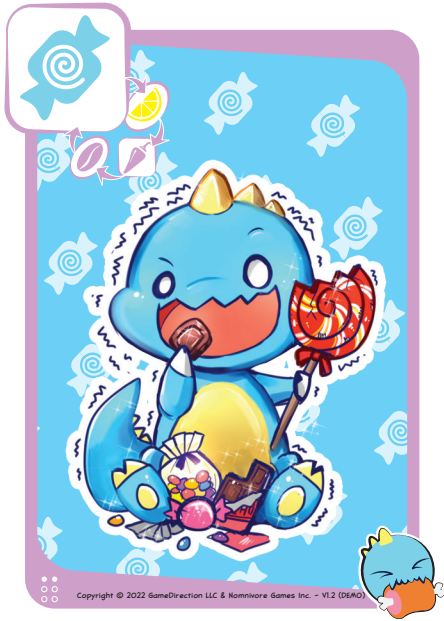
FOR MORE CUTE ART:
Belli-Buttons.com



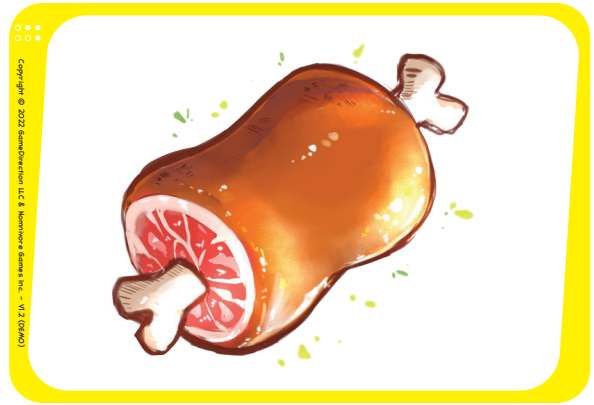
VERSION - 1.2 (DEMO)

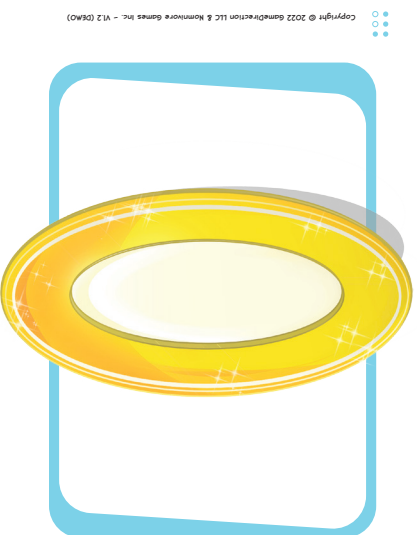
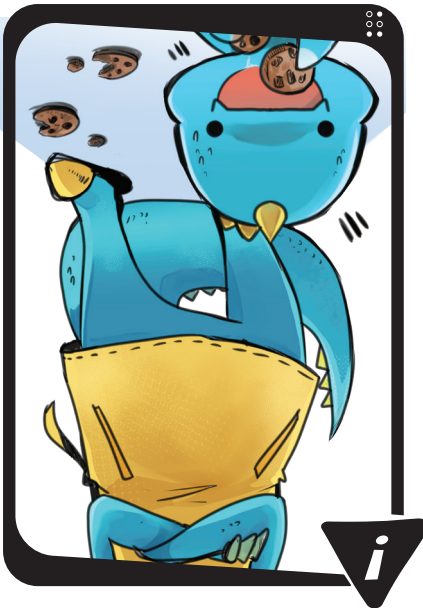
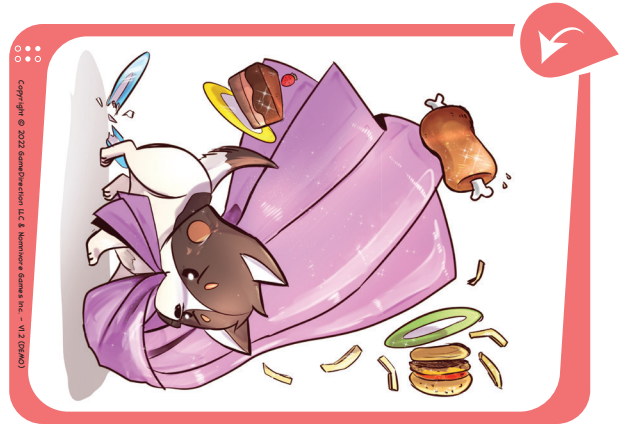


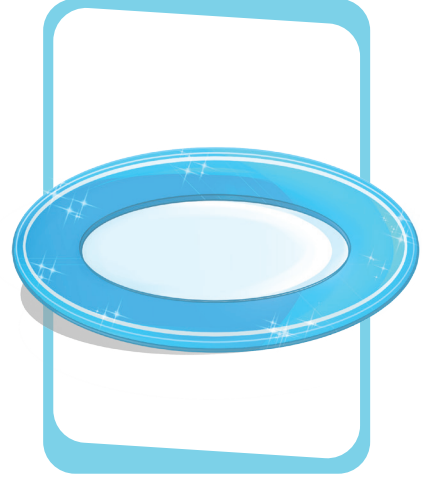








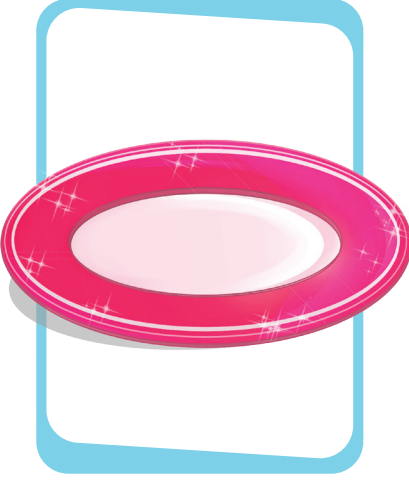




Copyright © 2022 GameDirection LLC & Nomnivore Games Inc. - V1.2 (DRAFT)



Copyright © 2022 GameDirection LLC & Nomnivore Games Inc. - V1.2 (DRAFT)



Copyright © 2022 GameDirection LLC & Nomnivore Games Inc. - V1.2 (DRAFT)

FLAVORS

FLAVORS
 Nomnivores are picky eaters. They love **SWEET** and **SPICY** flavors, but hate **BITTER** and **SOUP** ones!
SABOTAGE OTHERS! - If **SWEET** is the top **FLAVOR** on a **PLATE SCORE** or **SOUP** as the top **FLAVOR**, Cards can't be played on that **PLATE**. Cards can't be played on that **PLATE**.
PROTECT YOUR POOP! - If **SWEET** is the top **FLAVOR** on a **PLATE SCORE** or **SOUP** as the top **FLAVOR**, Cards can't be played on that **PLATE**. Cards can't be played on that **PLATE**.

SPECIAL CARDS

REX
 Rex, while lovable and cute, is a typhoon of destruction! When he appears, Rex storms in and makes a mess of everything!
 • Only playable on an **UNCLAIMED DISH!**
 • Return all cards on that **DISH** and **REX** to the **DECK!**



MOMMISAUUR
 Mommy loves you all equally. So if she catches you hoarding snacks, she'll make you share with your siblings!
 • Only playable on **CLAIMED DISHES!**
 • Return that **DISH** to the center of the table. That **DISH** and all its **SNACKS** are **UNCLAIMED** again!
 • Then, remove **MOMMISAUUR** until the next Round!

MOMMISAUUR
 Mommy loves you all equally. So if she catches you hoarding snacks, she'll make you share with your siblings!
 • Only playable on **CLAIMED DISHES!**
 • Return that **DISH** to the center of the table. That **DISH** and all its **SNACKS** are **UNCLAIMED** again!
 • Then, remove **MOMMISAUUR** until the next Round!

REX
 Rex, while lovable and cute, is a typhoon of destruction! When he appears, Rex storms in and makes a mess of everything!
 • Only playable on an **UNCLAIMED DISH!**
 • Return all cards on that **DISH** and **REX** to the **DECK!**

SPECIAL CARDS

SABOTAGE OTHERS! - If **SWEET** is the top **FLAVOR** on a **PLATE SCORE** or **SOUP** as the top **FLAVOR**, Cards can't be played on that **PLATE**. Cards can't be played on that **PLATE**.
PROTECT YOUR POOP! - If **SWEET** is the top **FLAVOR** on a **PLATE SCORE** or **SOUP** as the top **FLAVOR**, Cards can't be played on that **PLATE**. Cards can't be played on that **PLATE**.

FLAVORS
 Nomnivores are picky eaters. They love **SWEET** and **SPICY** flavors, but hate **BITTER** and **SOUP** ones!

2

SCORING

DISHES that you have claimed are scored at the **END** of a Round. Play a **MOM!** on an **UNCLAIMED DISH** to claim it as yours!
 When starting the next Round, the **DISHES** are tasty!



EVERYTHING ELSE
 Everything else isn't tasty. They're worth **POINTS!**
SNACKS are tasty! Every **SNACK** is worth **1 POINT!**



HOW TO WIN
 A game ends after 3 ROUNDS. Have the **MOST POINTS** at the end to win!

FLAVORS

FLAVORS
 Nomnivores are picky eaters. They love **SWEET** and **SPICY** flavors, but hate **BITTER** and **SOUP** ones!
SABOTAGE OTHERS! - If **SWEET** is the top **FLAVOR** on a **PLATE SCORE** or **SOUP** as the top **FLAVOR**, Cards can't be played on that **PLATE**. Cards can't be played on that **PLATE**.
PROTECT YOUR POOP! - If **SWEET** is the top **FLAVOR** on a **PLATE SCORE** or **SOUP** as the top **FLAVOR**, Cards can't be played on that **PLATE**. Cards can't be played on that **PLATE**.

REX
 Rex, while lovable and cute, is a typhoon of destruction! When he appears, Rex storms in and makes a mess of everything!
 • Only playable on an **UNCLAIMED DISH!**
 • Return all cards on that **DISH** and **REX** to the **DECK!**

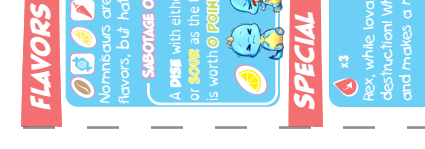
MOMMISAUUR
 Mommy loves you all equally. So if she catches you hoarding snacks, she'll make you share with your siblings!
 • Only playable on **CLAIMED DISHES!**
 • Return that **DISH** to the center of the table. That **DISH** and all its **SNACKS** are **UNCLAIMED** again!
 • Then, remove **MOMMISAUUR** until the next Round!

SCORING

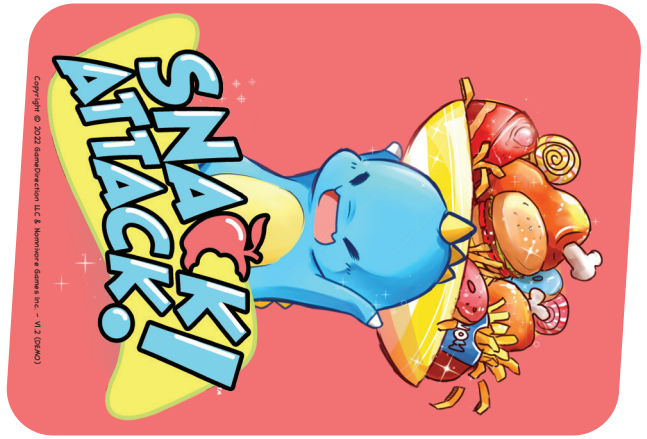
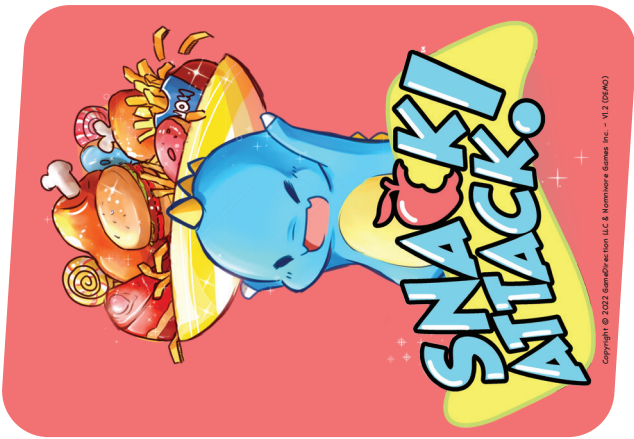
DISHES that you have claimed are scored at the **END** of a Round. Play a **MOM!** on an **UNCLAIMED DISH** to claim it as yours!
 When starting the next Round, the **DISHES** are tasty!

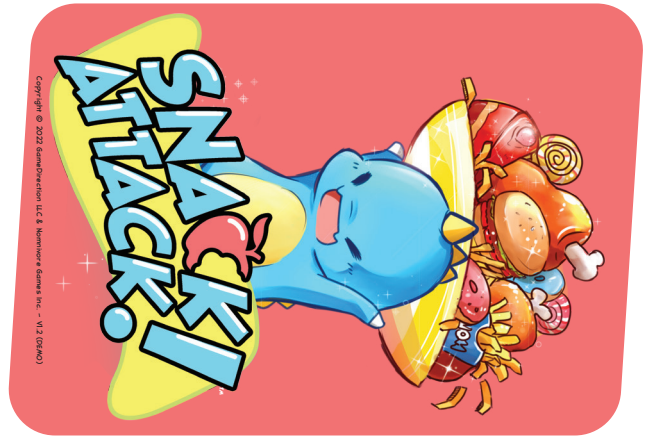
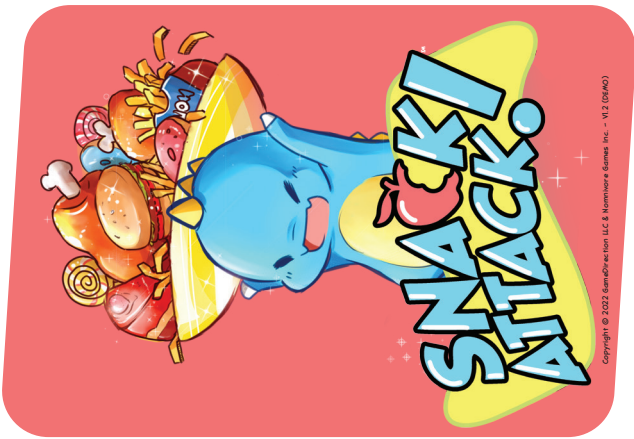


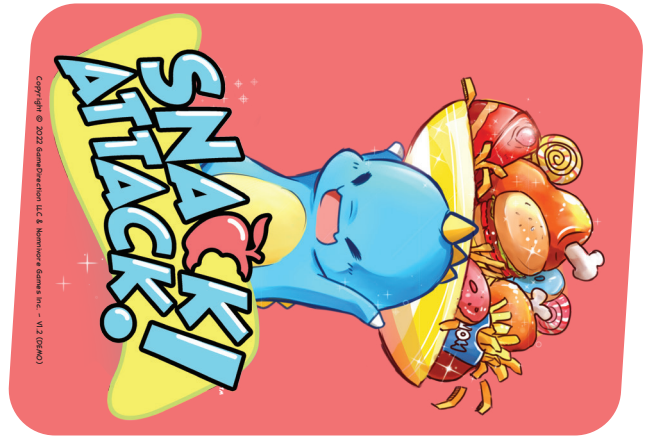
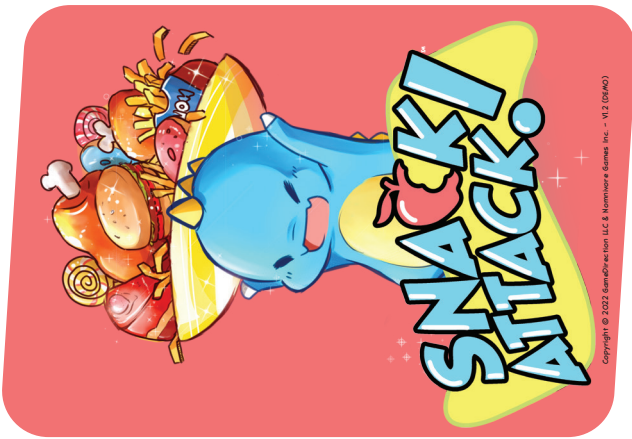
EVERYTHING ELSE
 Everything else isn't tasty. They're worth **POINTS!**
SNACKS are tasty! Every **SNACK** is worth **1 POINT!**

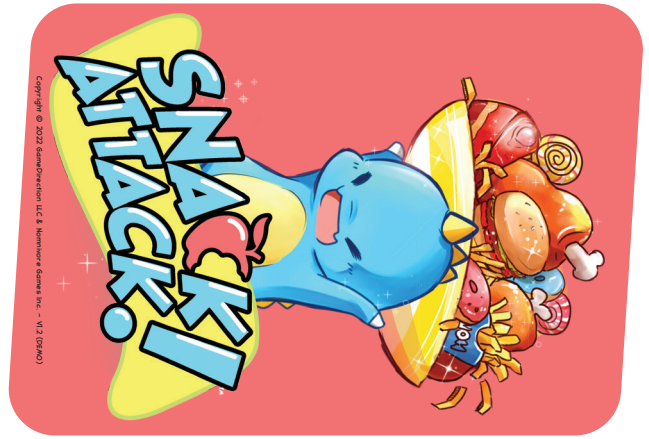
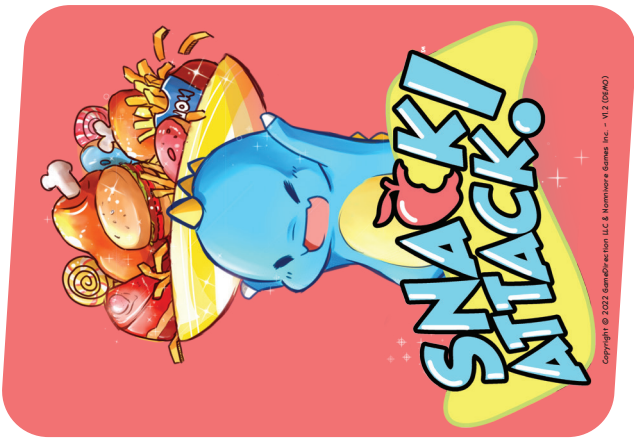


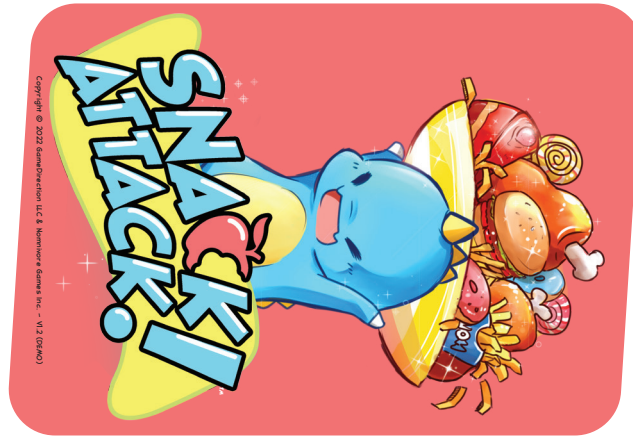
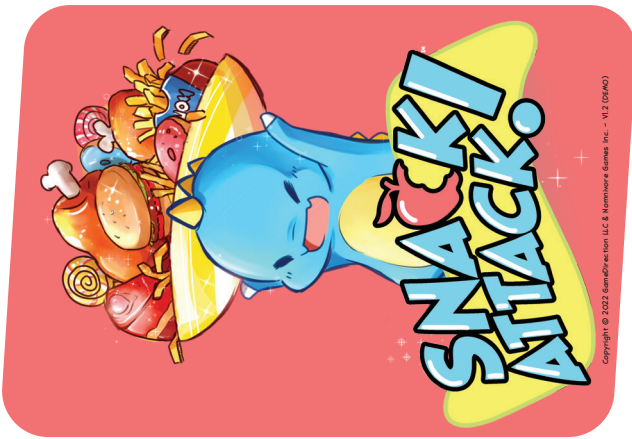
HOW TO WIN
 A game ends after 3 ROUNDS. Have the **MOST POINTS** at the end to win!

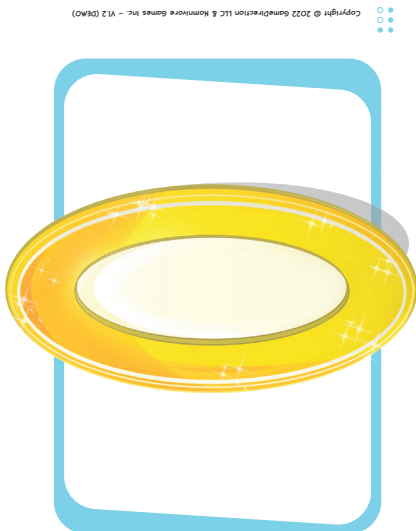
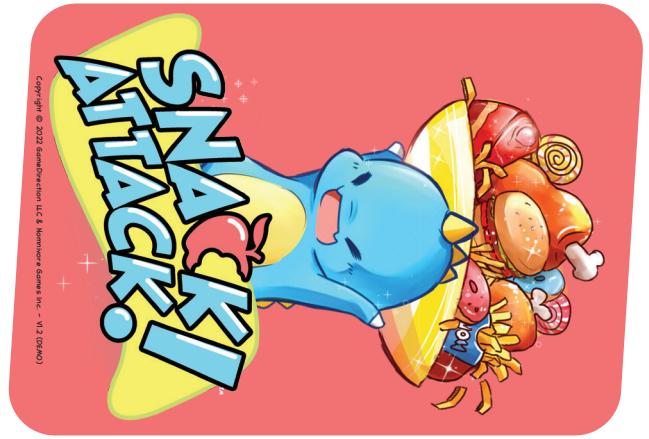
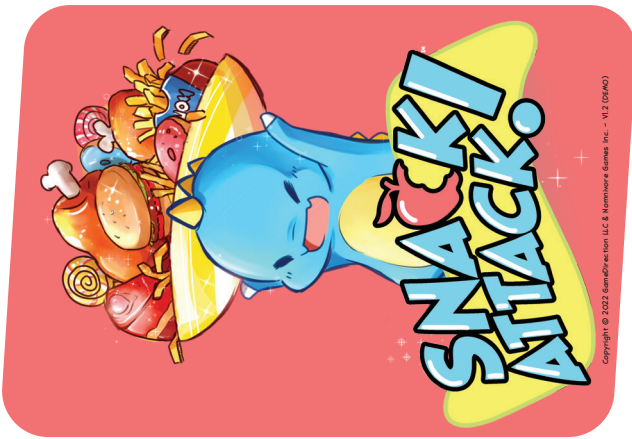


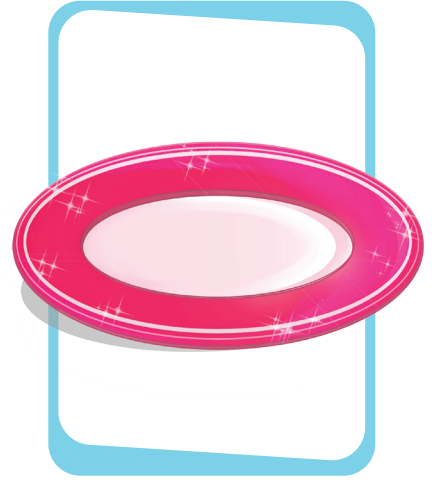








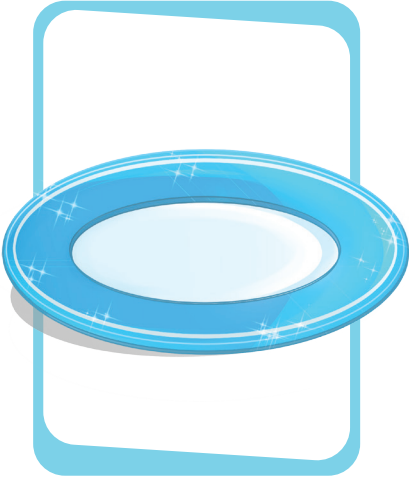




Copyright © 2022 GameDirection LLC & Nomnivore Games Inc. - V1.2 (DEMO)



Copyright © 2022 GameDirection LLC & Nomnivore Games Inc. - V1.2 (DEMO)



Copyright © 2022 GameDirection LLC & Nomnivore Games Inc. - V1.2 (DEMO)

REFERENCE

SNACKS & NOM!

- x24 SNACKS**
- Only playable on UNCLAIMED DISHES!
- **1 POINT** Value to that DISH!



- x7 NOM!**
- Only playable on UNCLAIMED DISHES!
- Claim an UNCLAIMED DISH as yours!



DISHES

- x4 UNCLAIMED DISH**
- Play **SNACKS** or **FLAVORS** on this!
- Play **NOM!** to claim!



CLAIMED DISH

- At the end of each Round, score **1 POINT** for each **SNACK** on each DISH you Claimed.
- Play **FLAVORS** on this!



For the FAQ and a video tutorial, visit: NOMNIVOREGAMES.COM

Copyright © 2022 GameDirection LLC & Nomnivore Games Inc. - V1.2 (DEMO)

For the FAQ and a video tutorial, visit: NOMNIVOREGAMES.COM

Copyright © 2022 GameDirection LLC & Nomnivore Games Inc. - V1.2 (DEMO)

RULES

STORY

Momnivour has come home from the store and brought home lots of snacks! Snag the tasty treats before your siblings can get their paws on them!



SET-UP

- Place **DISHES** at the center of the table according to the number of **PLAYERS**.



2X: 2
3-4X: 3-4

HOW TO PLAY

- The **who LAST ATE CANDY (IN REAL LIFE)** plays first by:
 - Play **1** & Draw **1** OR Discard **3** & Draw **3**
 - The **to the LEFT** goes next.
 - A Round ends once all **DISHES** have been **CLAIMED** (using **NOM!** cards!)



SNACKS & NOM!

- x24 SNACKS**
- Only playable on UNCLAIMED DISHES!
- **1 POINT** Value to that DISH!



- x7 NOM!**
- Only playable on UNCLAIMED DISHES!
- Claim an UNCLAIMED DISH as yours!



DISHES

- x4 UNCLAIMED DISH**
- Play **SNACKS** or **FLAVORS** on this!
- Play **NOM!** to claim!



- CLAIMED DISH**
- At the end of each Round, score **1 POINT** for each **SNACK** on each DISH you Claimed.
- Play **FLAVORS** on this!



For the FAQ and a video tutorial, visit: NOMNIVOREGAMES.COM

Copyright © 2022 GameDirection LLC & Nomnivore Games Inc. - V1.2 (DEMO)

STORY

Momnivour has come home from the store and brought home lots of snacks! Snag the tasty treats before your siblings can get their paws on them!



SET-UP

- Place **DISHES** at the center of the table according to the number of **PLAYERS**.



2X: 2
3-4X: 3-4

HOW TO PLAY

- The **who LAST ATE CANDY (IN REAL LIFE)** plays first by:
 - Play **1** & Draw **1** OR Discard **3** & Draw **3**
 - The **to the LEFT** goes next.
 - A Round ends once all **DISHES** have been **CLAIMED** (using **NOM!** cards!)



Copyright © 2022 GameDirection LLC & Nomnivore Games Inc. - V1.2 (DEMO)

RULES